

JJ/PS/19732

10<sup>th</sup> April 2025

Chris Woodcock  
c/o Manx Auto Sport Ltd  
23 Laurys Avenue,  
Ramsey,  
Isle of Man,  
IM8 2HE

Dear Chris,

**RE: Manx National**  
11-12<sup>th</sup> April 2025  
*Permit No's: 200461*

Thank you for your application, in accordance with NCR Chapter 13, Appendix. 12 Article. 3.26, to run 30 second starts. This is authorised for all stages and your stage diagrams are approved, this also includes for 30 second starts.

Notwithstanding the provisions contained in NCR Chapter 13, Appendix.2, Articles 4.28-29, at all venues issued with a Motorsport UK Track Licence ALL non-competing vehicles MUST be parked behind the circuit safety barriers during the normal running of a special stage. At all other venues the 30m provision in NCR Chapter 13, Appendix 2, Article 4.28 is the MINIMUM distance that a non-competing vehicle may be located from the edge of the stage. The nature of the stage, weather conditions etc, must be taken into consideration and the distance that non-competing vehicles are stationed from the edge of the stage increased accordingly.

The granting of this permission does not preclude the right of the Motorsport UK Safety Delegate (if present) the Motorsport UK Steward or Event Stewards where no Motorsport UK Steward is appointed from requesting alterations on the grounds of safety.

Please ensure that this letter and the stamped diagrams are shown to the Motorsport UK Steward before the start.

This letter is only valid if it is an original and the diagrams are stamped by Motorsport UK.

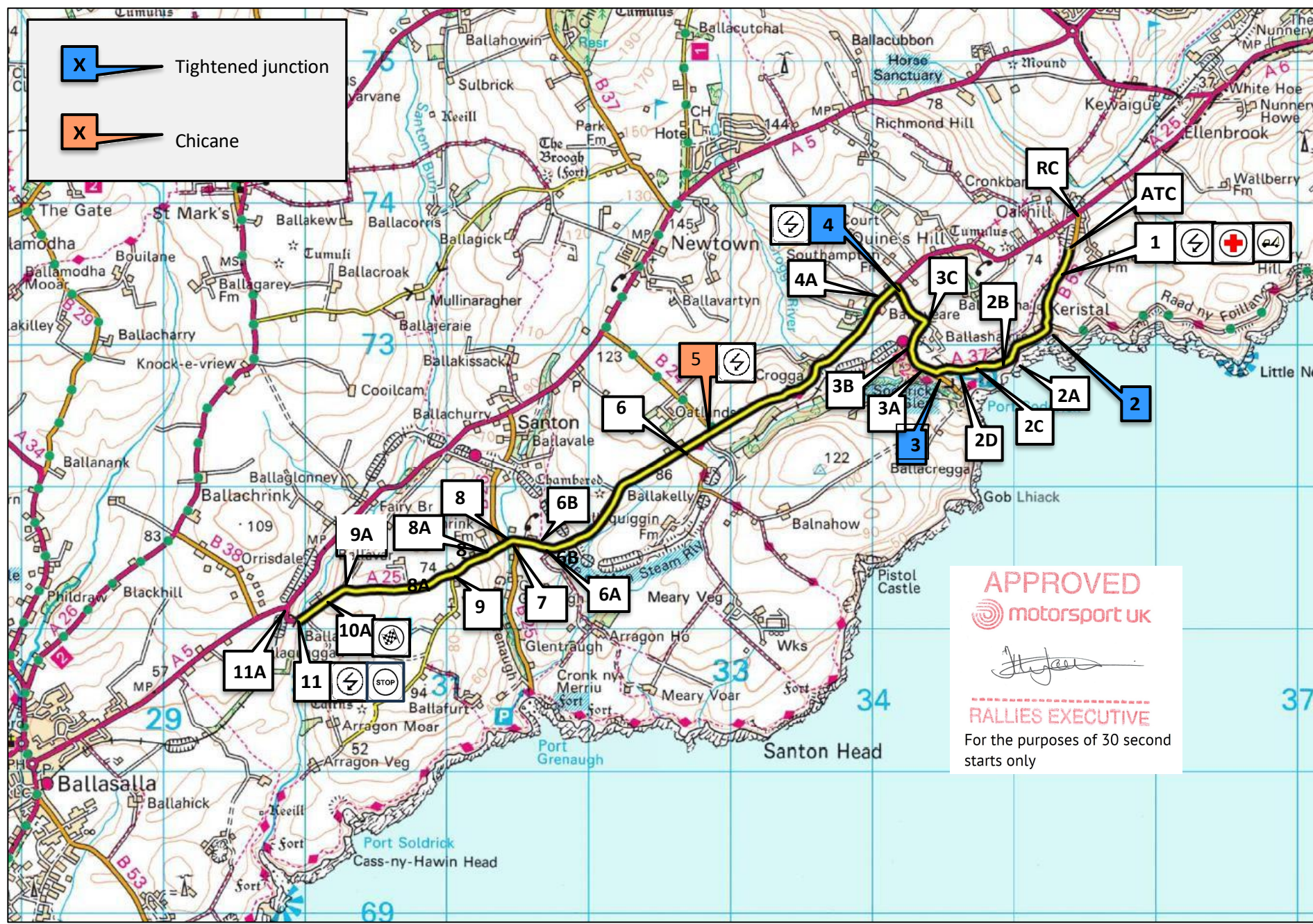
Yours sincerely



**JONATHAN JACKSON**  
Head of Rallying

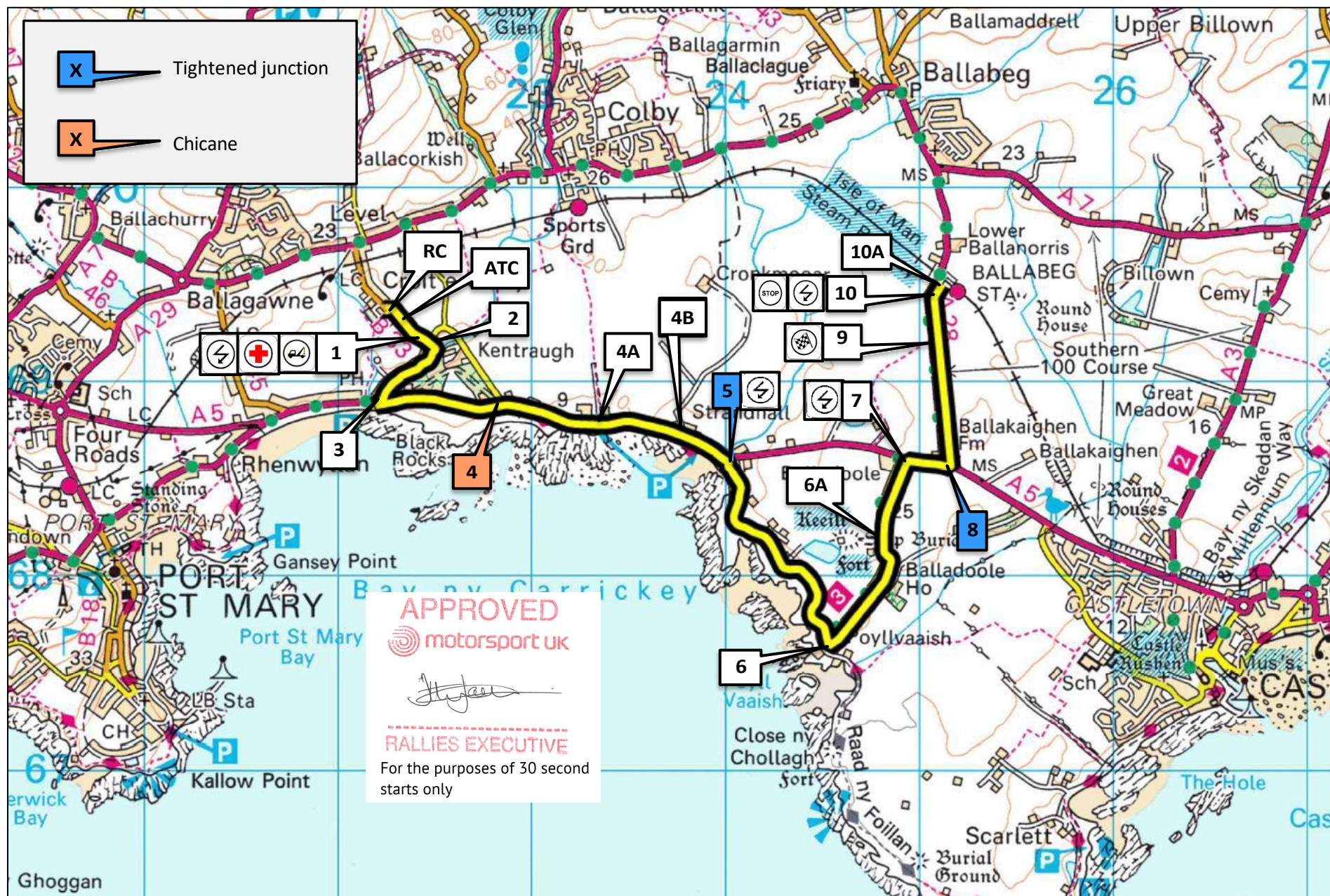
2025 Manx Rally  
SS1/6 – Keristal – 4.57 miles – v2 – 15.03.25

Page 2 of 17

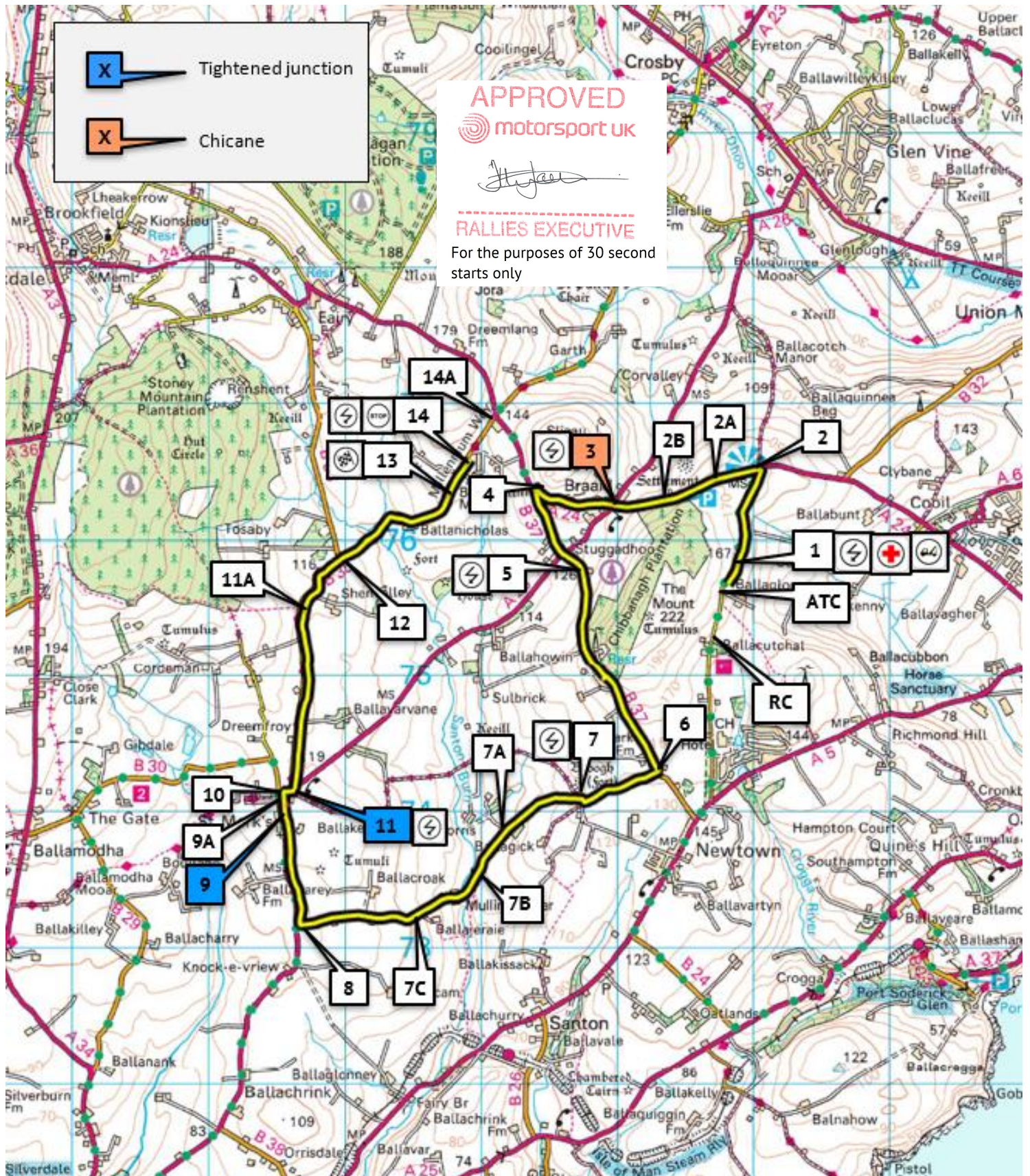




## Page 2 of 17

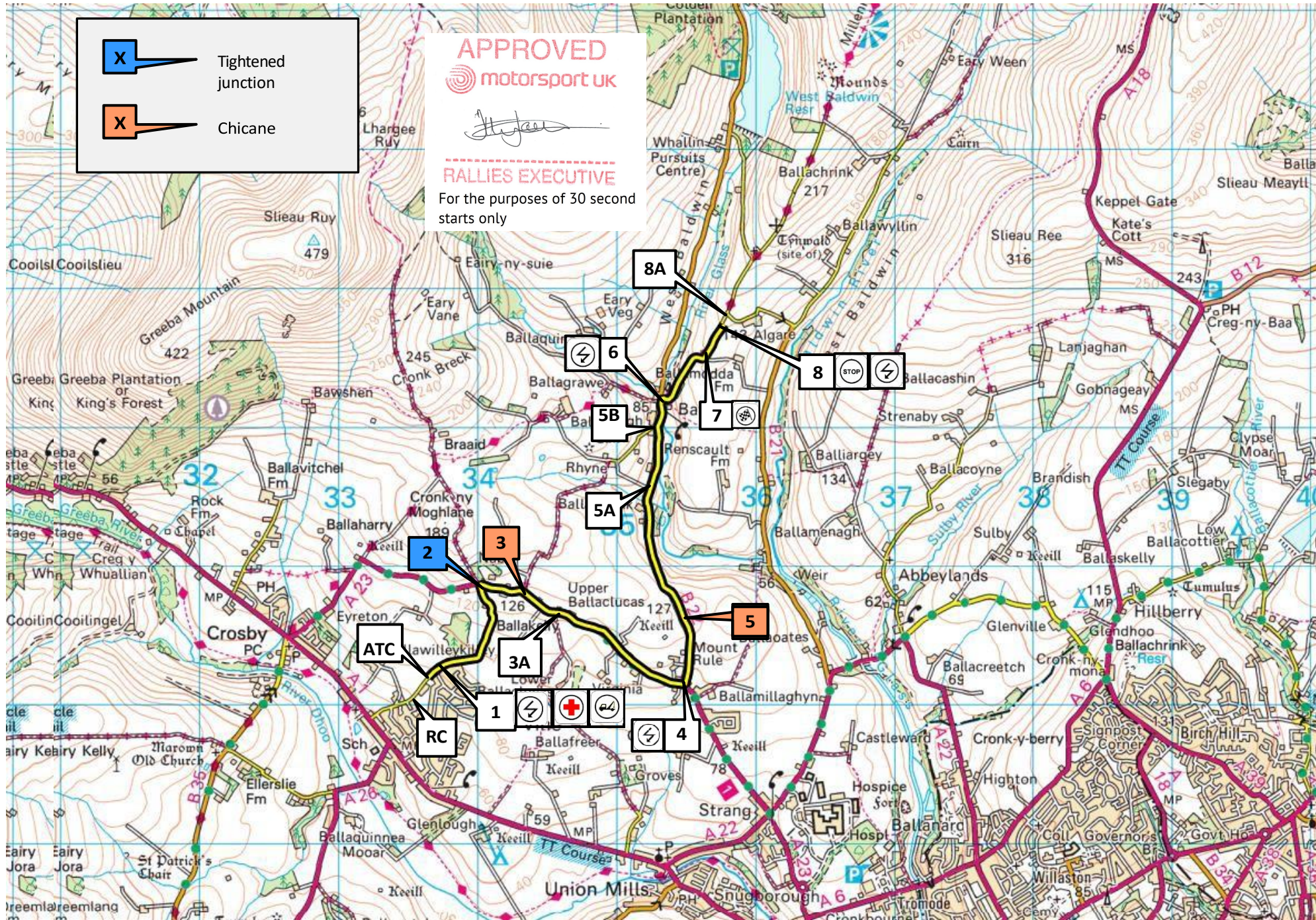






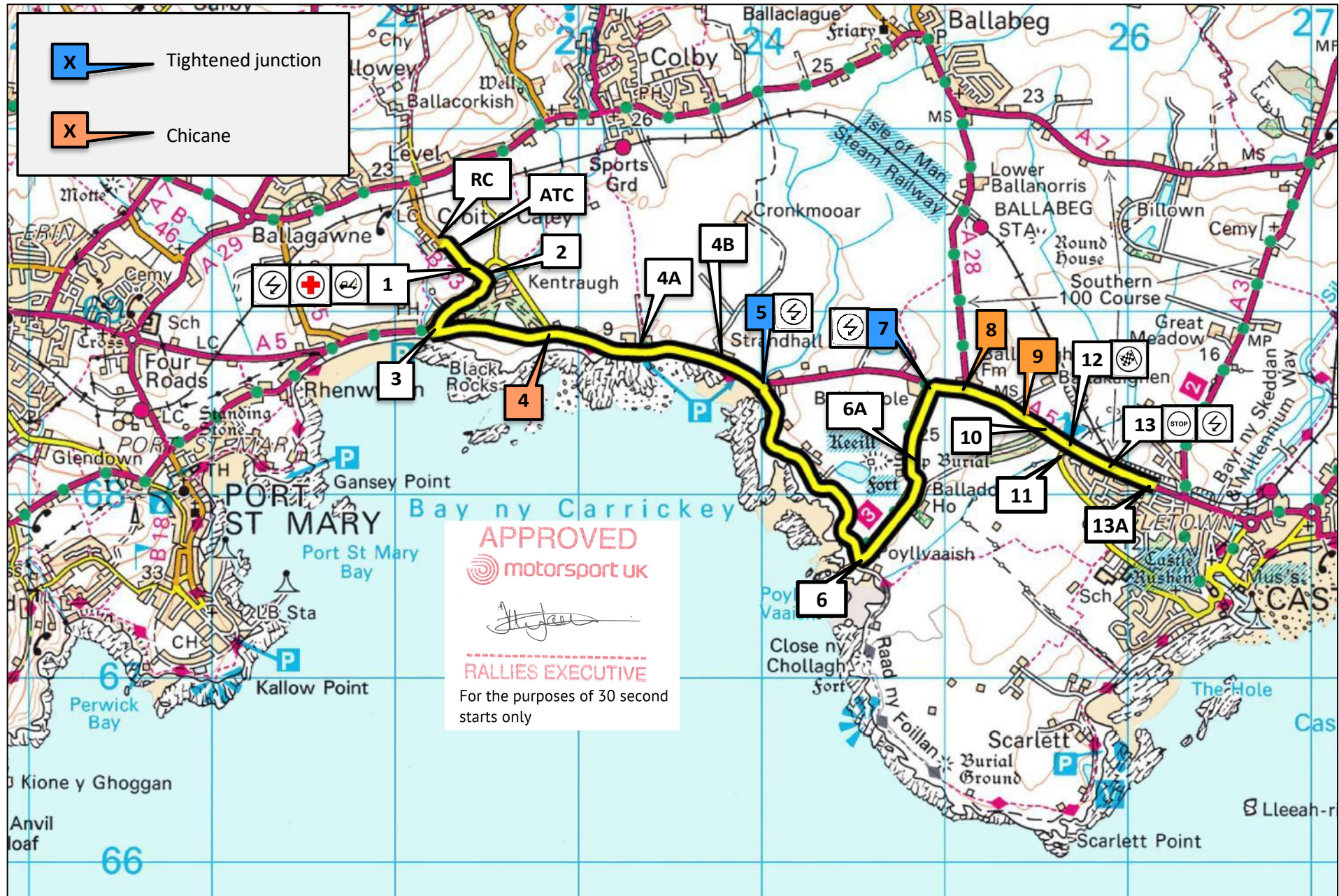


## SS5 – The Nab – 3.40 miles – v2 – 15.03.25

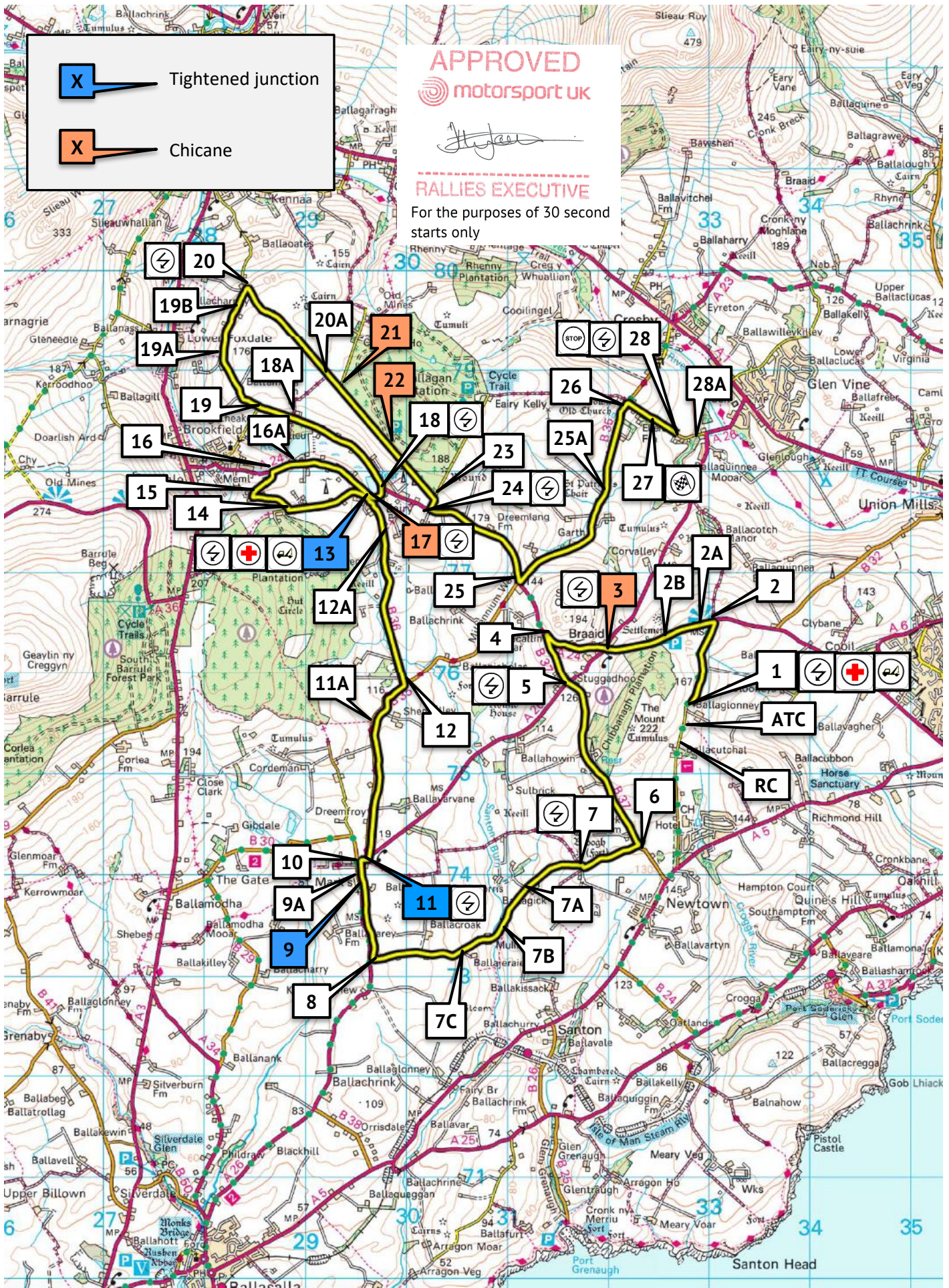




## SS7/8 – Balladoole 1 &amp; 2 – 3.7 miles – v4 – 15.03.25

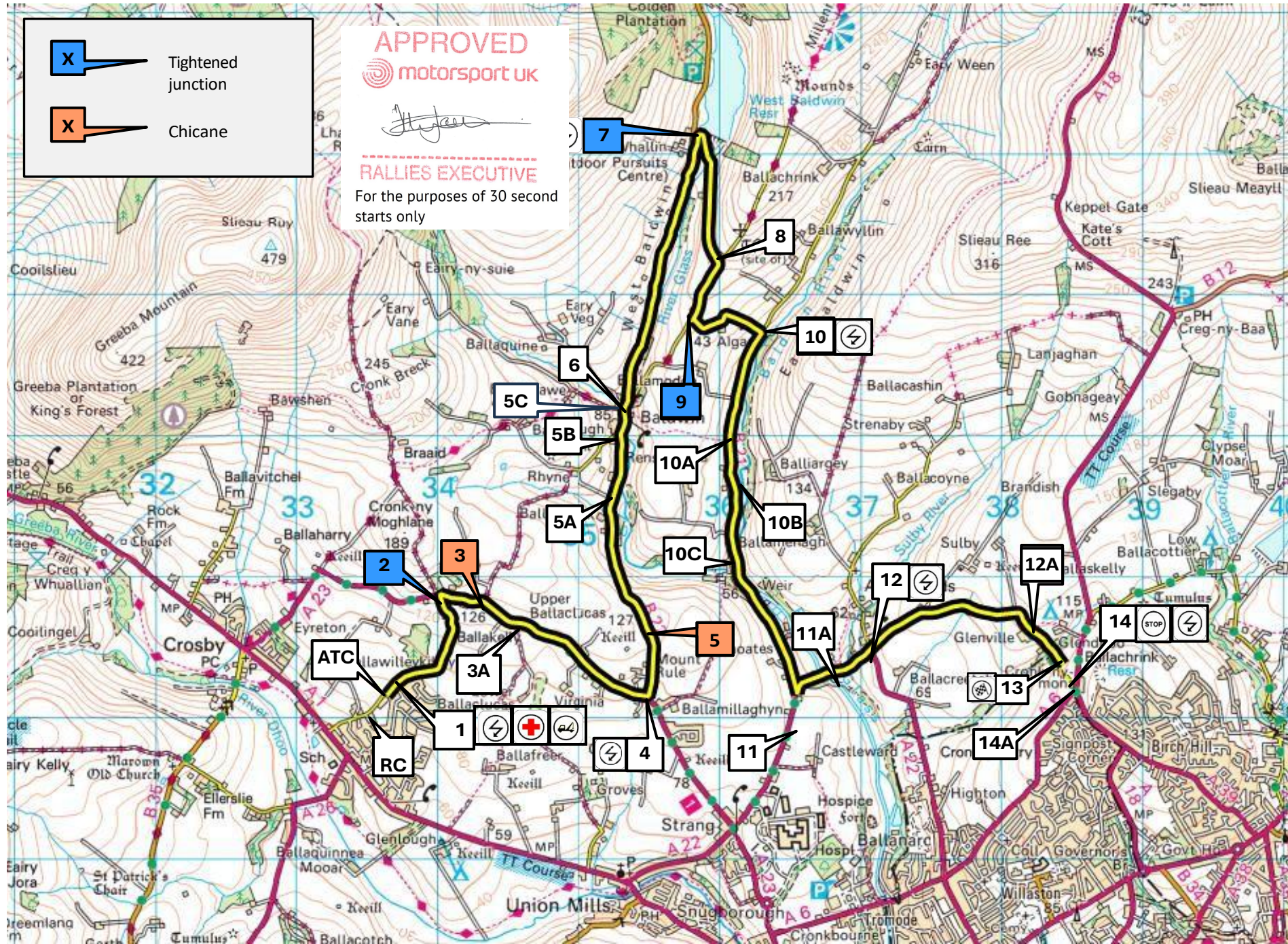








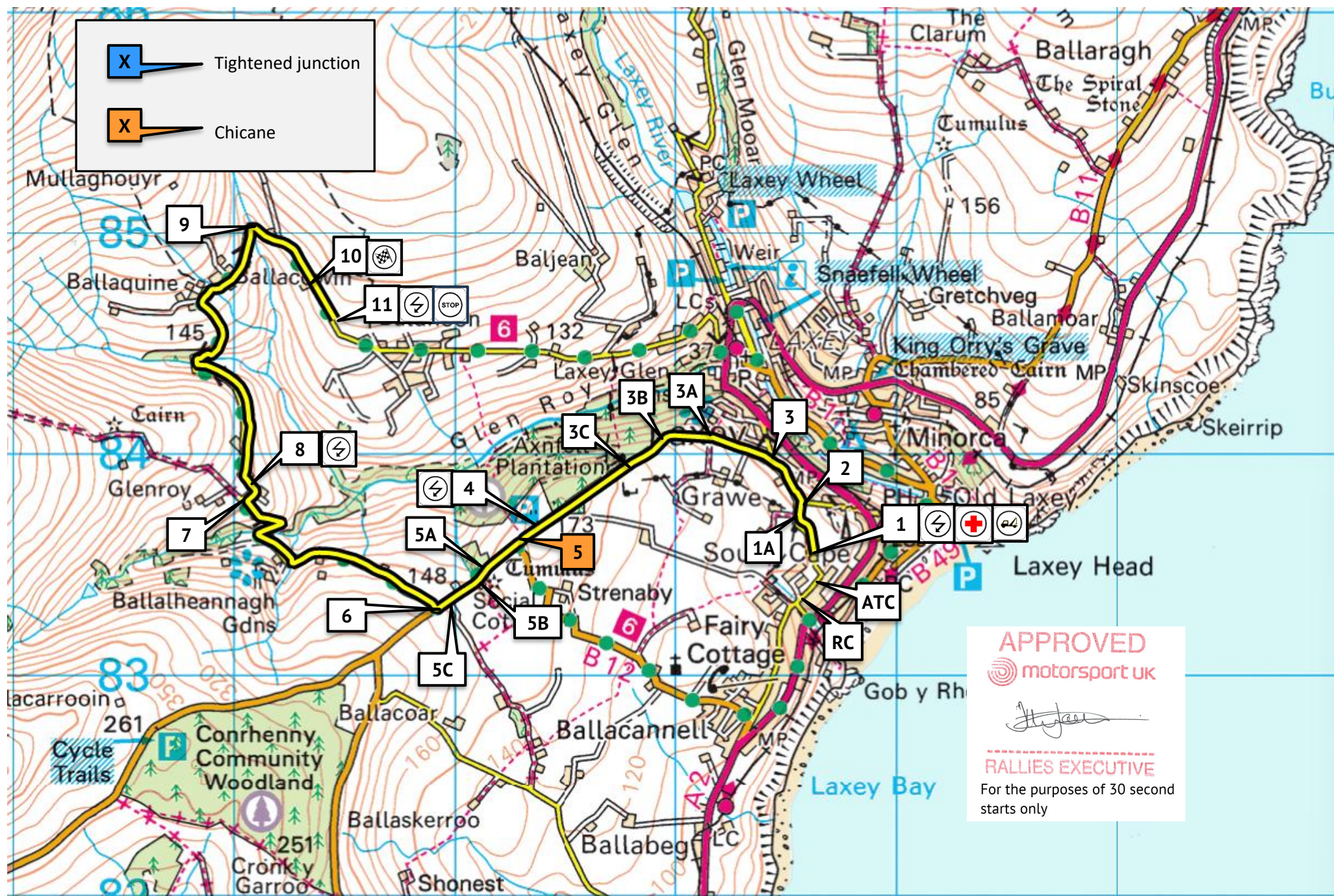
## SS10 – Abbeylands – 8.57 miles – v5 – 15.03.25





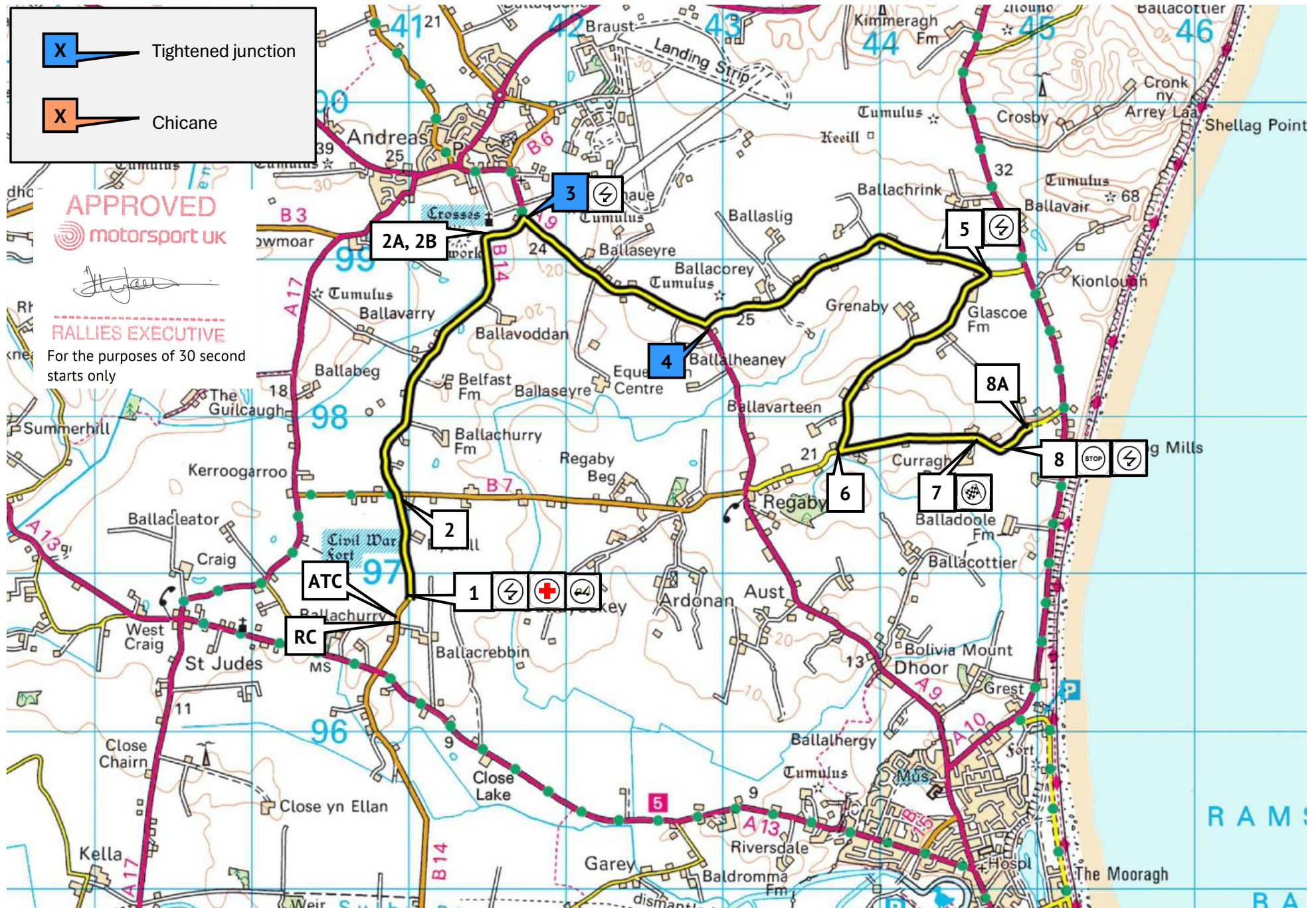
2025 Manx Rally  
SS11/15 – Axnfell – 3.74 miles – v4 – 15.03.25

Page 2 of 14





## Page 2 of 13





## SS13/17 – Kerrowmoor 1 &amp; 2 – 9.00 miles – v4 – 15.03.25

